

# DIRTEL IP PHONE IP990

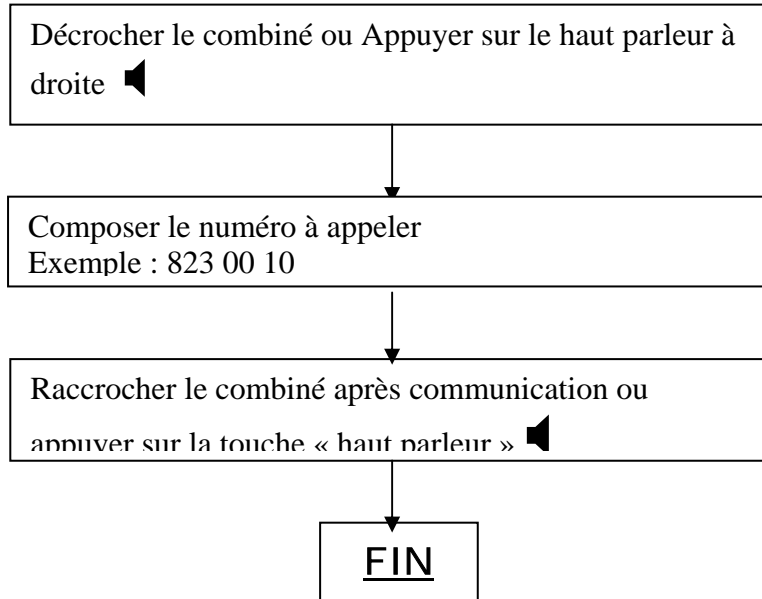
Manuel d'administrateur  
Version 4.2d



<http://www.dirtel.net> - bring the technology back to home !

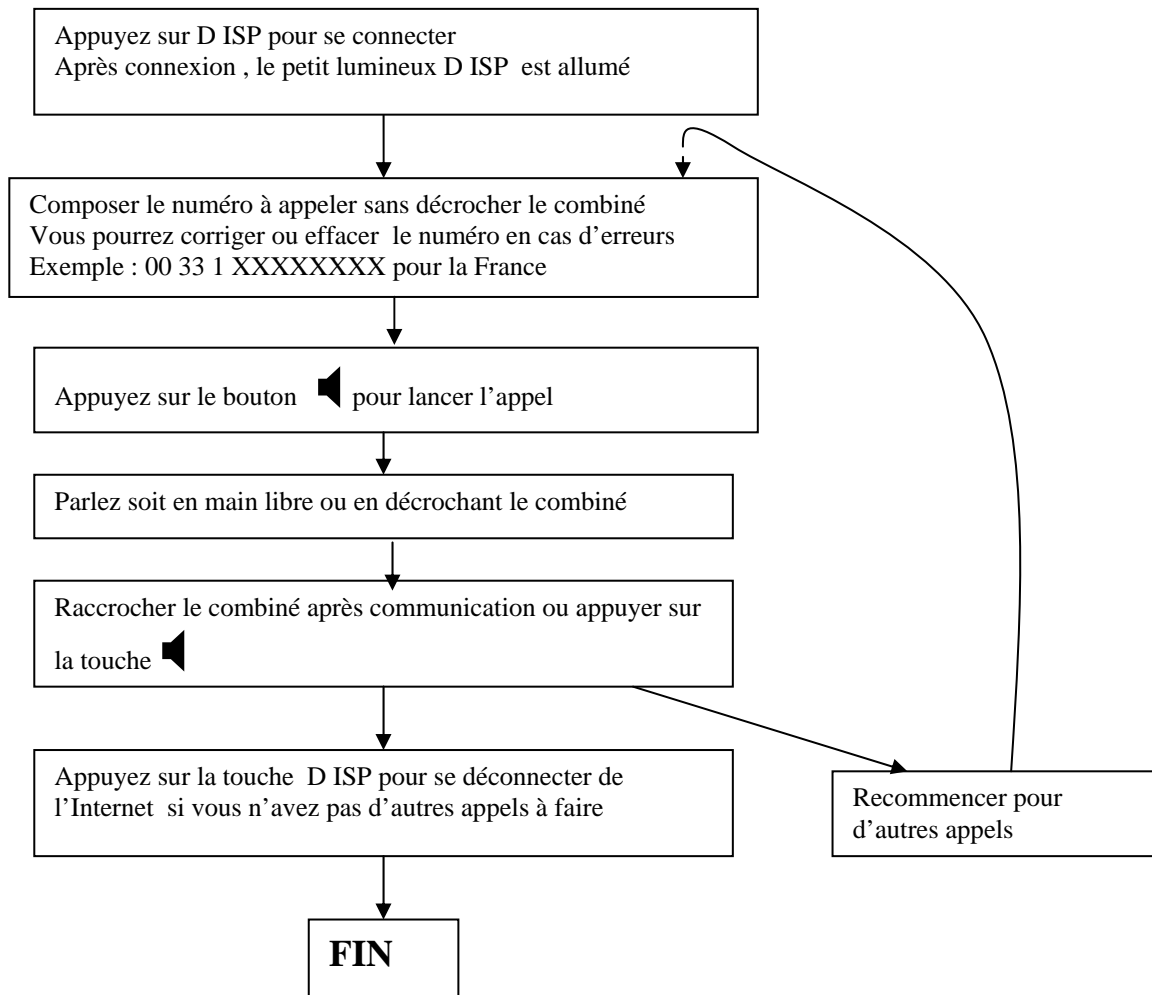
# QUICK START POUR DIRTEL IP PHONE IP990

## 1. Appel avec le téléphone en mode PSTN, RTC (Appel local ou normal)

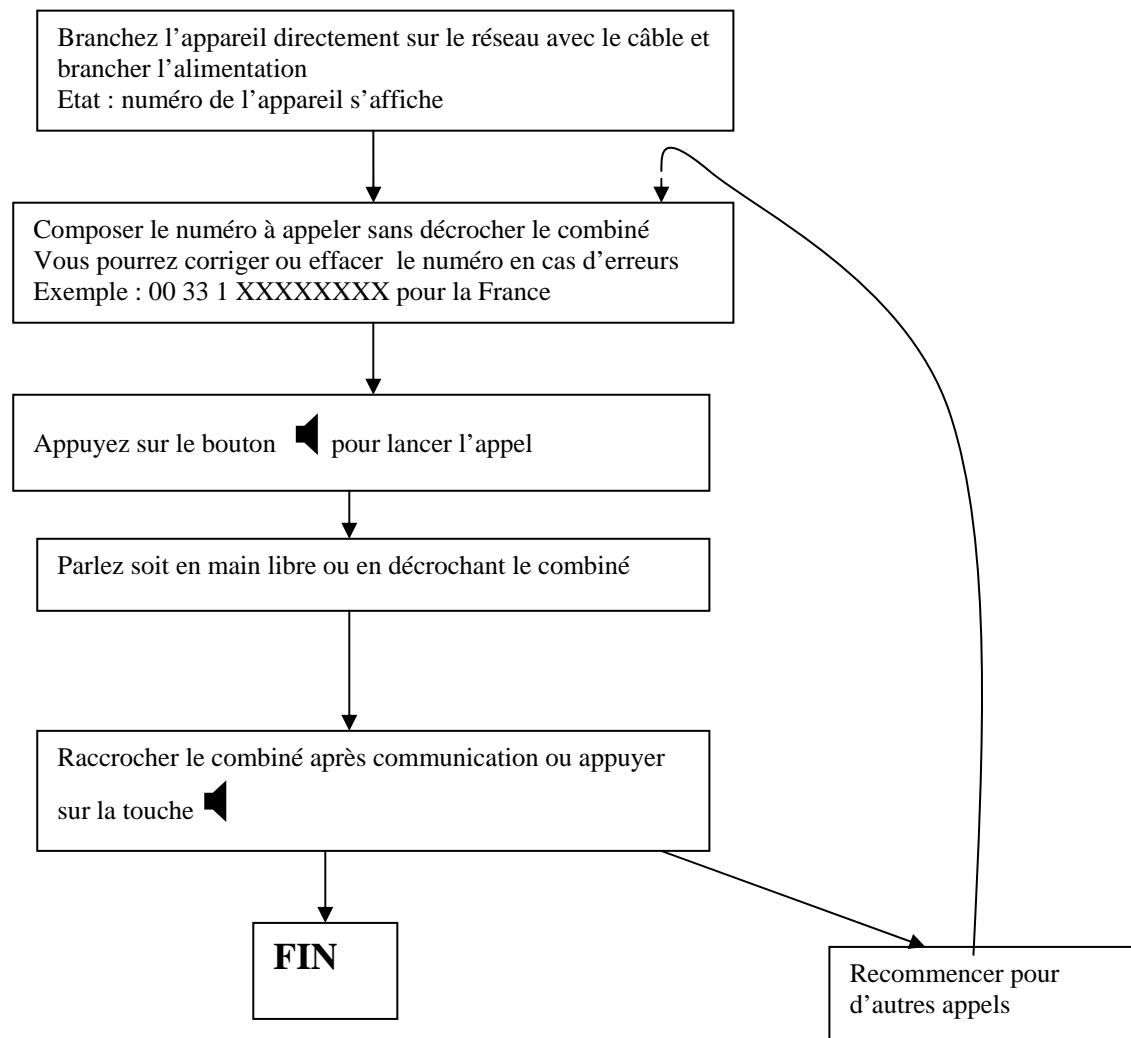


## 2. Appel vers l'international ou sur portable via le réseau de DIRTEL

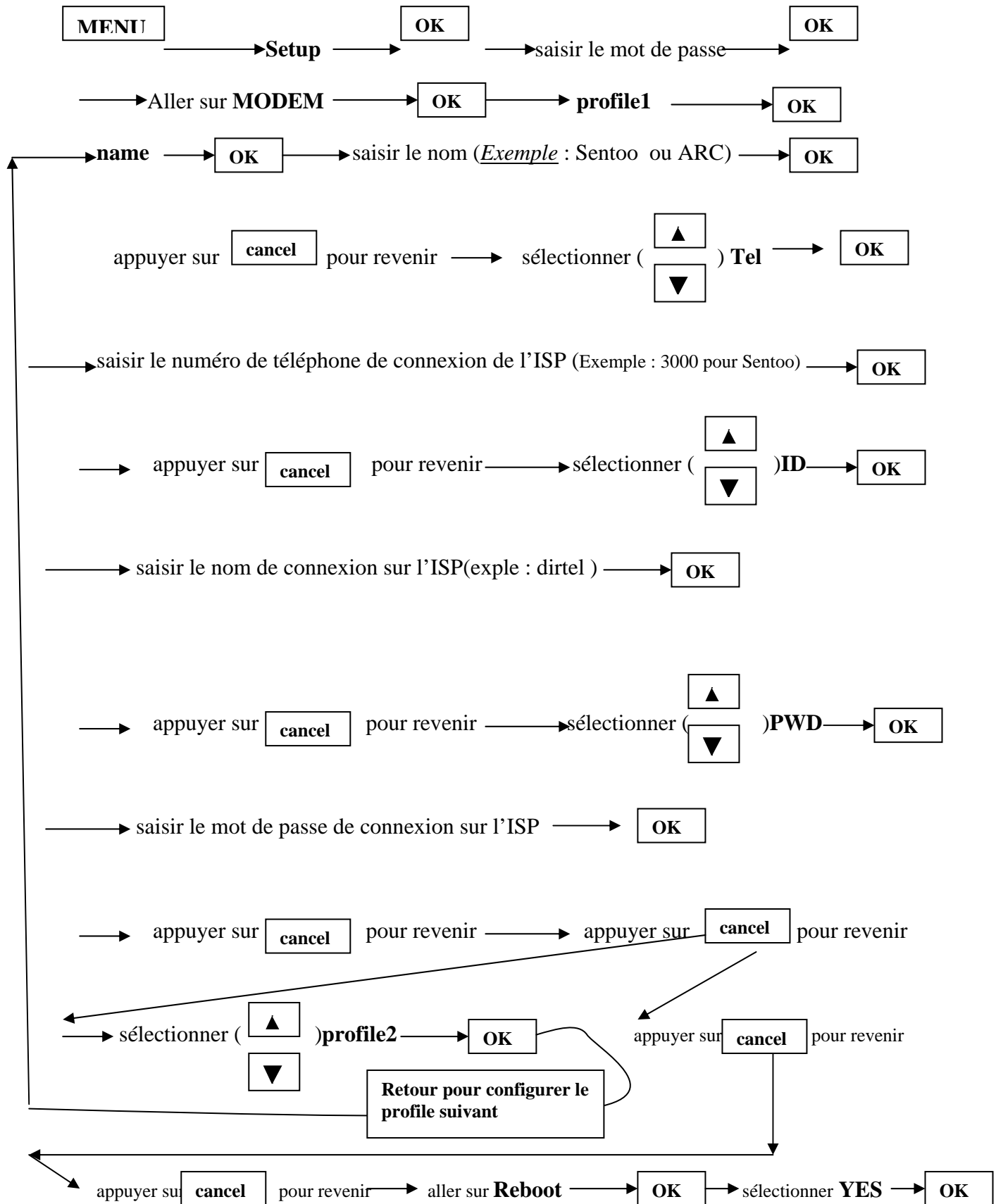
### *2.1 Dial up : abonnement sur ligne téléphonique normale RTC*



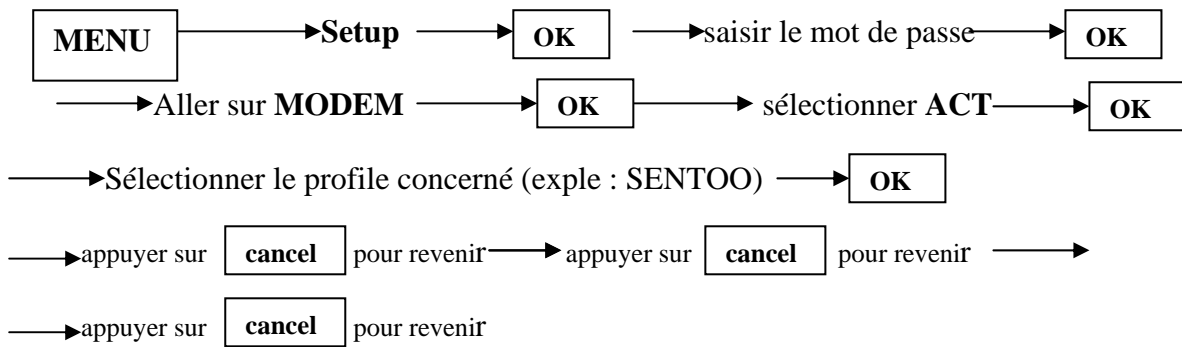
## 2.2 Accès Internet par LS ou ADSL



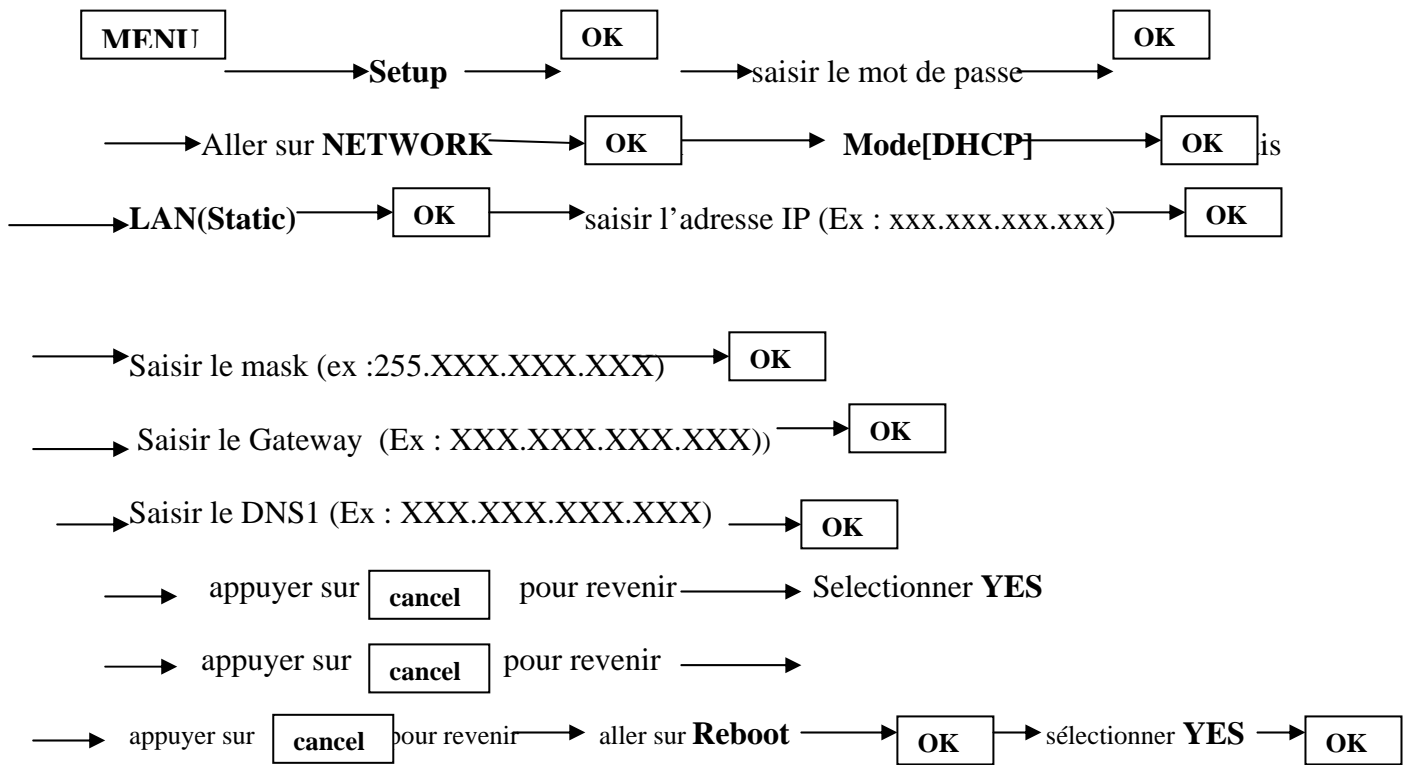
GUIDE DE L'UTILISATEUR POUR DIRTEL IP PHONE IP990  
Configurer un profile utilisateur ISP dial UP



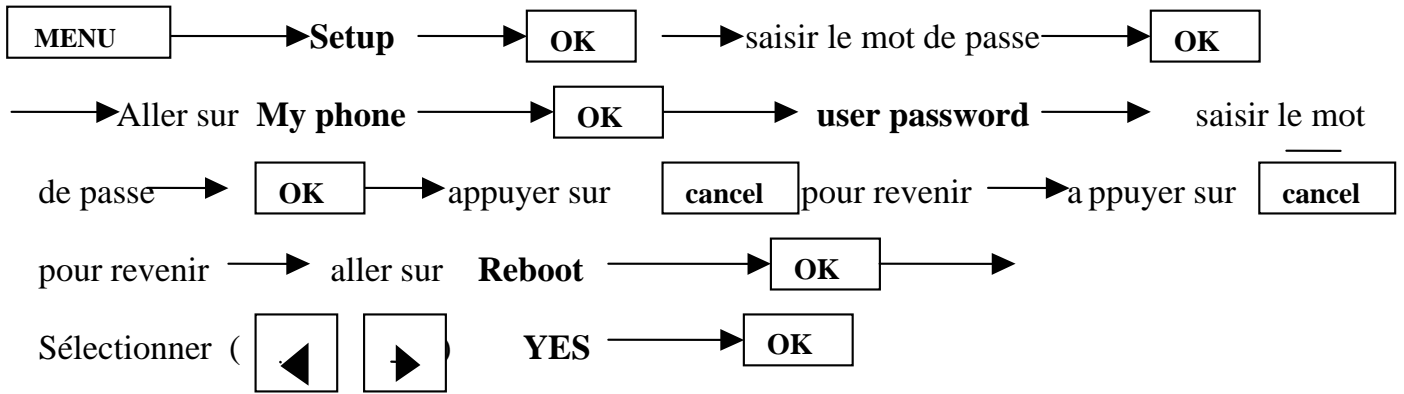
## Sélectionner ou activer un profile ou compte ISP



## Configurer l'appareil sur un réseau TCP/IP pour LS ou ADSL



changer le mot de passe



## 1.1. Menu Structure

Call Log	Rcvd Calls			
	Dialed Calls			
	Tx/Rx Calls			
	Delete All			
Phone Book	Find Number	By Index		
		By Name		
	Add			
	Memory Dial	M1/ M2/ M3		
	* Delete All			
Ring/Volume	Ring Select	Ring 1		
		Ring 2		
		Ring 3		
	Volume			
Acct Balance				
* Setup	My Phone			
		* User PWD		
		* Admin PWD		
	Network	Auto Detect	NetDetect	Start
				Cancel
		Mode Select	LAN(Static)	IP
				Subnet Mask
				Gateway
				DNS
			DHCP	
			PPPoE	PPPoE ID
				PPPoE PWD
		NAT	Enable	IP

		Subnet Mask
		Disable
Link Speed	LAN	
	PC	

Call Setup	Service	MAC Address
		GK Address
		H323ID
		On-net No
		TTL

Modem	Time-out	
	Select Profile	ISP 1(Name)
		ISP 2(Name)
		ISP 3(Name)
	ISP 1(Name)	Name
	ISP 2(Name)	Tel No.
	ISP 3(Name)	ID
		PW

Time	Time Server
	Time Zone
	Summer Time

PSTN	Flash Time
	Dial Type
	County Code

Default

Information	Network
	Version
	Mac Address

Reboot

## 1.2. Features

- Easy to use, simple to activate
- VAD (Voice Activity Detection)
- Volume control
- Speed dialing keys
- Phone book
- Last number redial
- LCD display
- Call Mute
- Silence suppression
- Echo cancellation/compensation
- Excellent voice quality DSP technology
- Network management with SNMP-based NMS
- Software updates/upgrades via remote access
- Interoperable with standards-based gatekeepers and gateways
- Configurable phone number assignment to match dial plan
- Remote management via SNMP, Telnet and HTTP
- OEM customization available
- 1-year warranty

## 1.3. Specification

### **LAN Interface**

#### **Standards**

ITU H.323 v4, H.225, H.245

ITU G.711, G.723.1, G.729.A

IEEE 802.3

10/100 base-T

PPPoE, DHCP

#### **Management**

Telnet, RS-232, http

#### **CODEC Options**

G.711, G.729.A, G.723.1

#### **Power**

5VDC, 2A

#### **Dimensions**

14cm W × 4.3cm H × 17.5cm D

#### **Weight**

0.73kg

#### **Operating Temperature**

32°F to 131°F (0°C to 55°C)

#### **Operating Humidity**

10% to 85% noncondensing

#### **Storage Temperature**

32°F to 149°F (0°C to 65°C)

#### **Storage Humidity**

5% to 90% noncondensing

#### **Dial-up Interface**

- Data Rates from 300 bps to 56k bps. (If needed in use, the rate can be limited by software)
- Data Modulation Standards V.90, V.34, V.432bis, V.22bis, V.22, V.23, V.21 and V.23 reversible (Minitel), Bell 212, Bell 103 Dialup Modem V.42 Error Control
- Country Code support
- V.42 Error Control
- V.42bis Compression
- Protected Against Surge and Over voltage on the Telephone Line

#### **Standard**

• ITU H.323 v4, H.225, H.245

• ITU G.723.1

#### **Codec**

• G.723.1